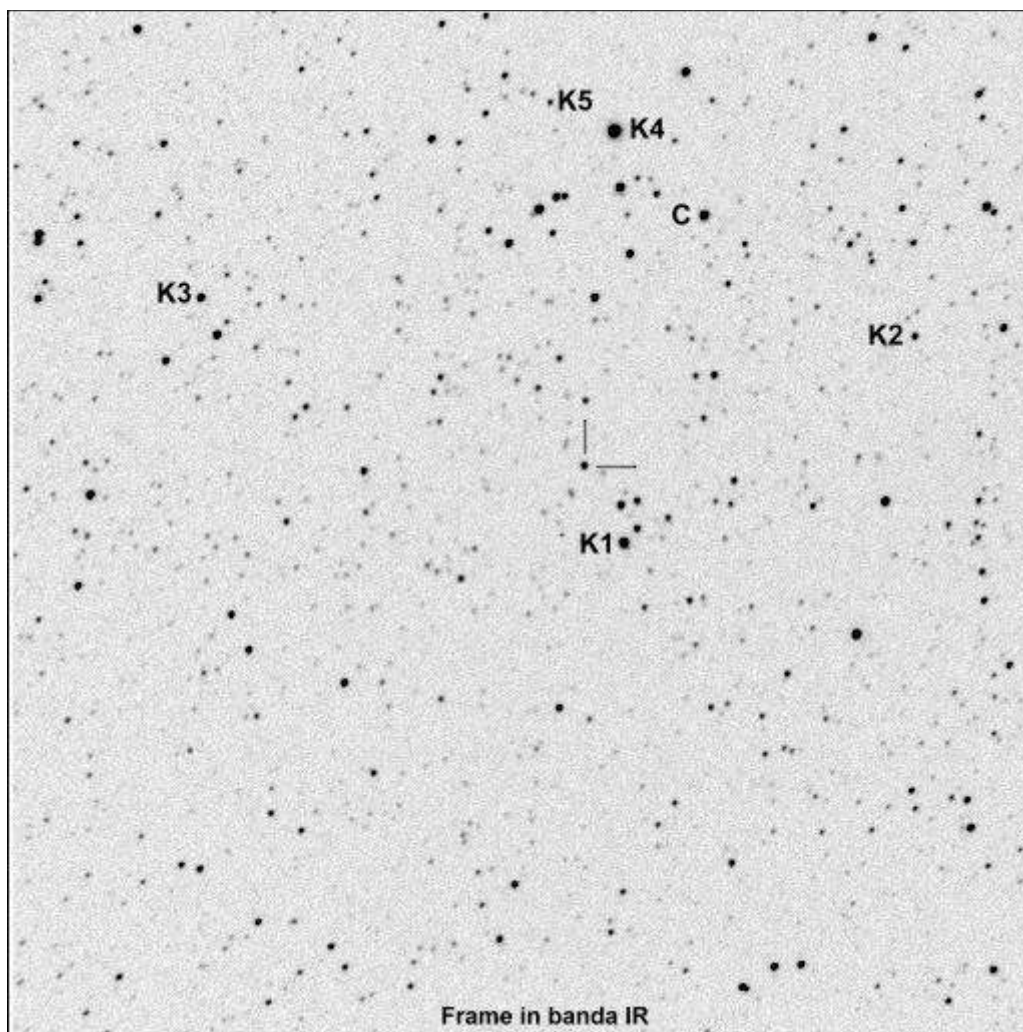


V737 Cyg

FK5 2000.0/2000.0 coordinates **19 54 36.0 +38 45 07**

B magn, V magn, Peculiarities **11.20, , V3**

Spectral type **M6.5**



Sequenza CCD

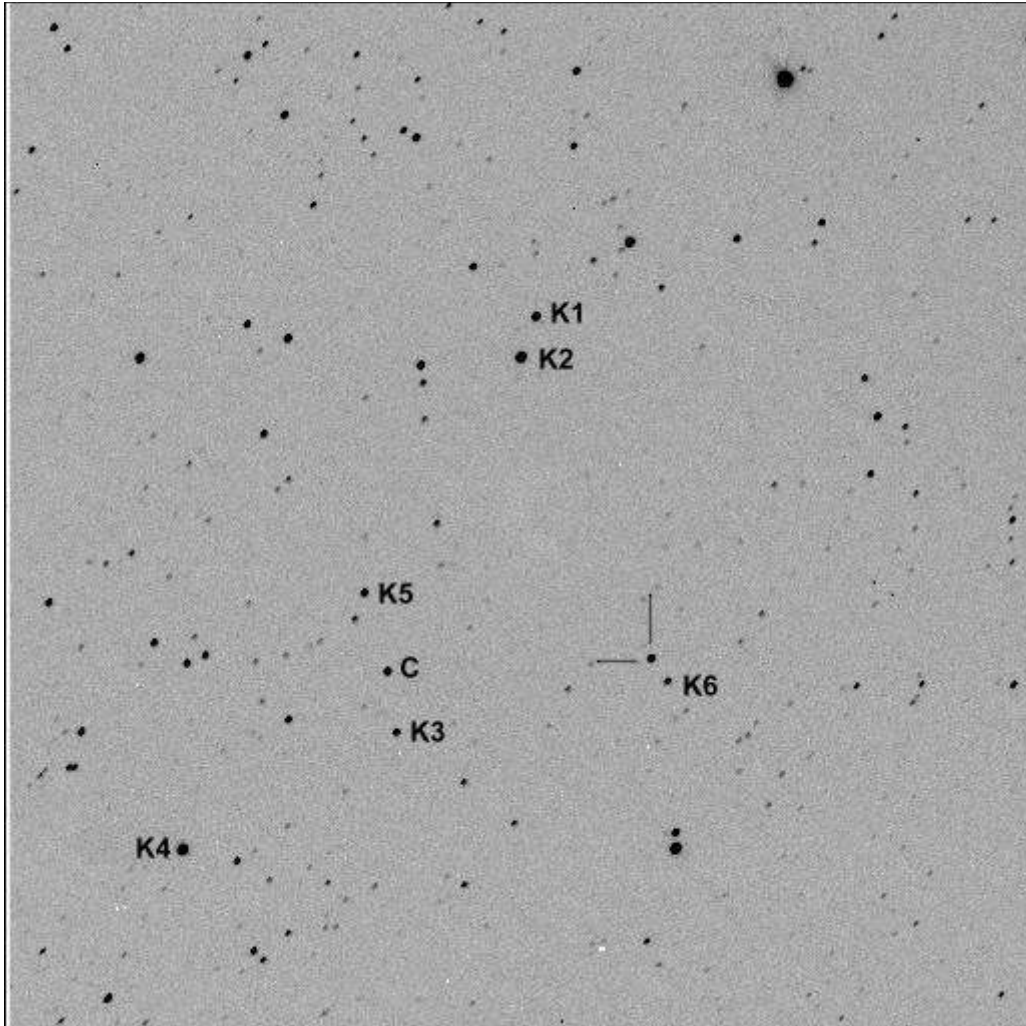
Rif	CCDB	CCDV	CCDR	CCDI
C	11.38	10.65	10.24	9.53
K1	10.38	9.98	9.84	9.37
K2	13.91	12.85	12.26	11.45
K3	12.50	11.65	11.18	10.46
K4	11.44	9.82	8.84	7.54
K5	13.57	13.05	12.85	12.36
K6				

SW Lyr

FK5 2000.0/2000.0 coordinates **18 55 01 +29 51.2**

B magn, V magn, Peculiarities **13.00**, , **V3**

Spectral type



Sequenza CCD

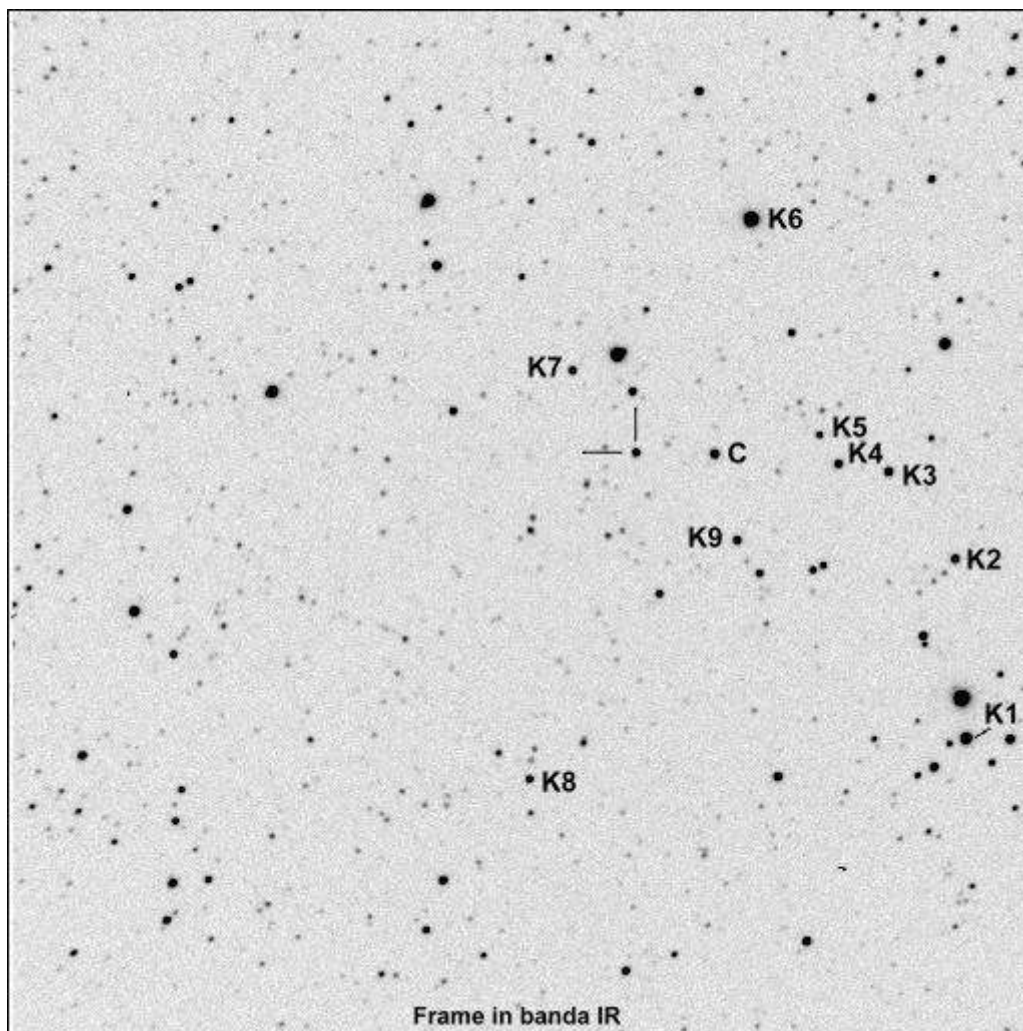
Rif	CCDB	CCDV	CCDR	CCDI
C	13.58	12.37	11.74	11.48
K1	12.20	11.70	11.40	11.14
K2	10.54	10.39	10.32	10.06
K3	13.83	12.91	12.43	12.15
K4	9.97	9.60	9.37	9.10
K5	13.59	12.75	12.30	12.01
K6	14.00	13.24	12.89	12.62

HU Cyg

FK5 2000.0/2000.0 coordinates **19 38 38 +35 54.6**

B magn, V magn, Peculiarities **13.50, , V3**

Spectral type



Sequenza CCD

Rif	CCDB	CCDV	CCDR	CCDI
C	11.16	10.76	10.54	10.22
K1	12.28	10.79	9.74	8.60
K2	10.53	10.47	10.50	10.41
K3	12.73	11.63	10.97	10.30
K4	13.29	12.12	11.39	10.68
K5	12.94	12.39	12.05	11.74
K6	11.20	9.85	8.78	7.37
K7	13.37	12.85	11.64	11.03
K8	13.55	12.41	11.78	11.18
K9	12.20	11.56	11.18	10.74